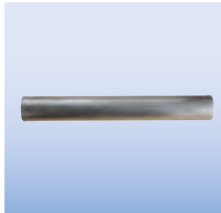


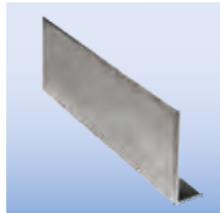
Modular railing system

Aluminium tube
Ø 40 x 4 x 6000



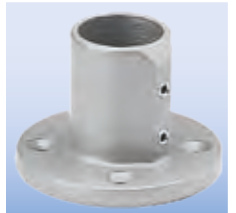
Version	Art.-No.
Aluminium	860149

Aluminium toeboard
100 x 30 x 6000



Version	Art.-No.
Aluminium	860156

Floor support
for Ø 40 mm



Screwing version	Art.-No.
Steel galvanised	860088
Stainless steel, V2A	860354

Floor support
for toeboard
for Ø 40 mm



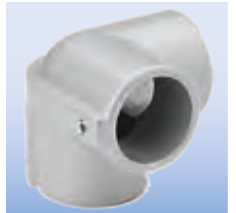
Screwing version	Art.-No.
Steel galvanised	860118
Stainless steel, V2A	860392

Floor wall support
for Ø 40 mm



Screwing version	Art.-No.
Steel galvanised	860095
Stainless steel, V2A	860361

Corner connector 90°, head piece
for Ø 40 mm



Screwing version	Art.-No.
Steel galvanised	860057
Stainless steel, V2A	860347

Corner connector 90°, open
für Ø 40 mm



Screwing version	Art.-No.
Steel galvanised	860040
Stainless steel, V2A	860316

Screw for toeboard



Version	Art.-No.
Stainless steel, V2A	860170
Stainless steel, V4A	860460

Tube drain plug
Ø 40 x 3



Version	Art.-No.
Plastic	860163

Cross connector
for Ø 40 mm



Screwing version	Art.-No.
Steel galvanised	860019
Stainless steel, V2A	860439

Tumbler bearing 180°



Screwing version	Art.-No.
Steel galvanised	860194
Stainless steel, V2A	860378

T-hinged connector
40 mm



Screwing version	Art.-No.
Steel galvanised	860064
Stainless steel, V2A	860323

Tube connector
Ø 40 mm



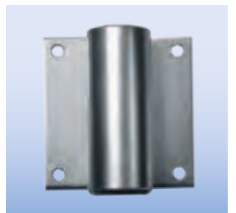
Screwing version	Art.-No.
Steel galvanised	860200
Stainless steel, V2A	860446

Safety plug



Version	Art.-No.
Steel galvanised	860132
Stainless steel, V4A	860309

Plug-in rail pocket



Screwing version	Art.-No.
Steel galvanised	860125
Stainless steel, V4A	860453

T-connector
for Ø 40 mm



Screwing version	Art.-No.
Steel galvanised	860002
Stainless steel, V2A	860415

Wall support
for Ø 40 mm



Screwing version	Art.-No.
Steel galvanised	860101
Stainless steel, V2A	860408

Angle hinged connector
for Ø 40 mm



Screwing version	Art.-No.
Steel galvanised	860071
Stainless steel, V2A	860330

Angle connector 45°/135°
for Ø 40 mm



Screwing version	Art.-No.
Steel galvanised	860033
Stainless steel, V2A	860385

Angle connector for 90°
for Ø 40 mm



Screwing version	Art.-No.
Steel galvanised	860026
Stainless steel, V2A	860422