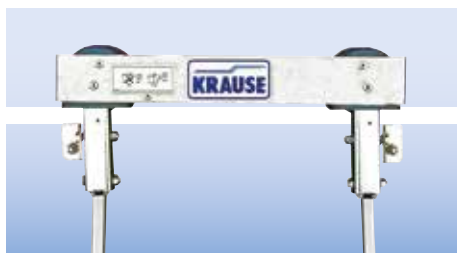


Top guide for T-rail system

+ Suitable for the T-rail system



Article No.

815262

Top guide for round tube rail system

+ Suitable for the round tube rail system



Article No.

815095

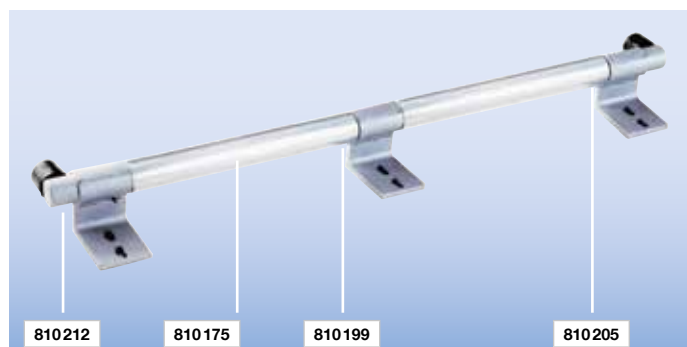
Spring-mounted castor for shelf ladders



Article No. (right/left)

815156

815163



810212

810175

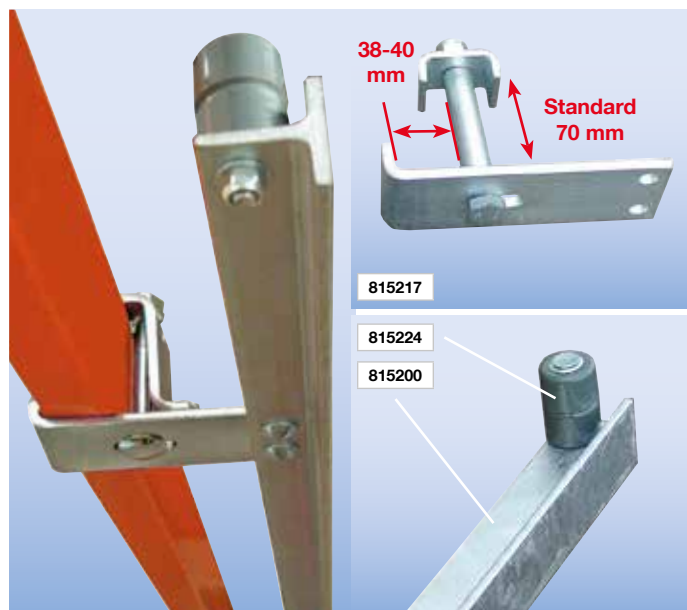
810199

810205

Aluminium round tube rail system

+ Intermediate brackets should be fitted with spacings of approx. 1 m

Rail system	Article No.
Light metal tube Ø 30 mm, 3000 mm long	810175
Light metal tube Ø 30 mm, 3000 mm long, anodised	810182
Intermediate bracket	810199
Holder with right end stop	810205
Holder with left end stop	810212



38-40 mm

mm

Standard
70 mm

815217

815224

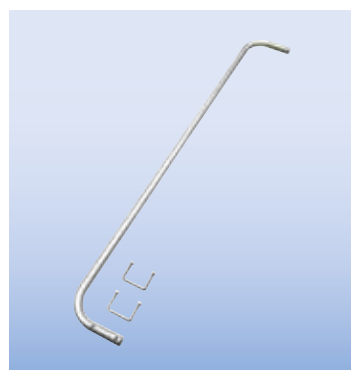
815200

T-rail system

- + No drilling on shelves
- + Intermediate brackets will be customised to fit the shelf
- + Intermediate brackets should be fitted with spacings of approx. 1 m

The shelf stabilisers have a width from 30 mm up to 48 mm

T-rail system	Article No.
T-rail, steel galvanised, 3000 mm long	815200
Intermediate bracket	815217
Left/right end stop	815224
Clip for profile connection (to connect T-Rails)	815279



Aluminium hand rail

+ For leaning ladders with rungs and steps to be fitted at the ladder as accessory

Hand rail for	Article No.
8-10 steps	817327
11-18 steps	817334



Aluminium holding bar

+ Retractable
+ With fastening clip

Article No. 817341